

# Sponsors

# IMPACT REPORT 2024



**392**

## Participants Served in Transitional Housing Program

*Our Transitions Program includes one-on-one support, behavioral therapy, groups, mentorship, and more!*



**186**

## Individuals Lived in Sponsors Long-Term Housing

*We offer 122 units of long-term housing across Eugene. Residents have access to many of our wraparound services.*



**1,226**

## Fulfilled Funding Requests

*\$152,051.23 was provided to 462 individuals. Funds pay for items like bus passes, work clothing, prescription glasses, vital records and move-in costs.*



**878**

## Hours Mentors Spent With Mentees

*Mentors support an individual's healthy social connections and offer friendship and stability, while participants work to rebuild their lives.*

## EVOLVING PROGRAMS & SERVICES REDUCE HARM

We continue to focus on providing the best support possible to our participants who struggle with substance use disorder. Services include onsite access to recovery meetings, transportation to Medication-Assisted Treatment, and assistance with recovery housing applications. We also offered Narcan training and Harm Reduction Education for staff.



**STAY CONNECTED!**

[sponsorsinc.org](https://sponsorsinc.org)



# 22,577

**Pounds of food received from Food for Lane County**

# 873

**Bags of donated clothing and household items**

# 347

**Appliances and pieces of furniture donated**



**Meet Anthony, our dedicated Procurement Coordinator! You may have met him when he picked up your donated items.**

# 332

**Individuals Received 1:1 Employment Search Support**

# 628

**Total Employment Support Sessions**

# 367

**Individuals Received 1:1 Assistance in Obtaining Long-Term Housing**



# 132

**Individuals Worked With a Peer Support Specialist**

# 103

**Individuals Engaged in Individual and Group Therapy**

# 2

**Full-time Certified Peer Wellness Specialists Were Hired**



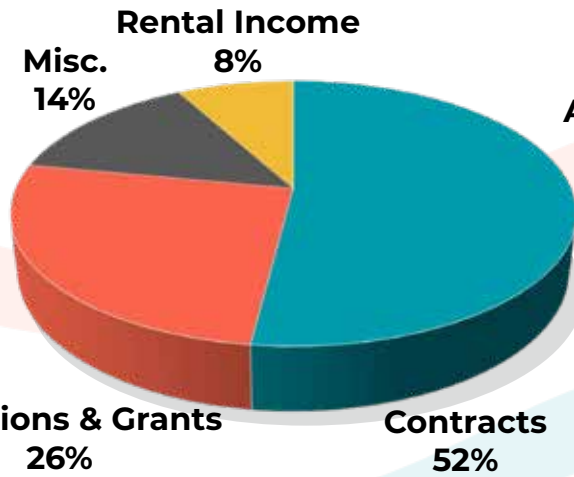
## **BICYCLE RECYCLERY, A WIN-WIN FOR SPONSORS AND THE COMMUNITY**

Just behind our Mentorship House sits Sponsors Bicycle Recyclery, a full-service bike repair and sales shop. Gilbert runs the program and works alongside Program Participants. The shop accepts old bikes and repairs them. The second chance bikes are sold to the community or lent to Transitions Program participants at no charge. The bikes provide an earth-friendly and free transportation option, Win-Win!

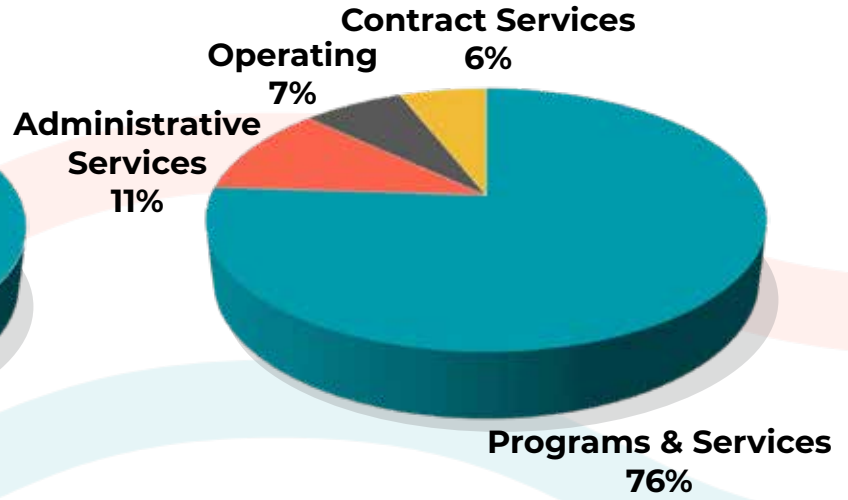
**See firsthand how your support is changing lives by joining us for a tour!**

# FISCAL YEAR IN REVIEW

## REVENUE



## EXPENSES



Total Funds Received ..... \$5,090,296.56

Total Expenses ..... \$5,002,885.38



**1,298** VOLUNTEER HOURS  
**\$32,969** VALUE OF VOLUNTEER TIME

**93%**

Successful Mentorship Matches

**57**

Mentors Matched With Mentees

**50**

Community-Based Events Hosted



**\$5,227**

Generated to support programs & services

**67**

Bikes prepared to be loaned out to participants

**56**

Bikes serviced for the community

**30**

Bikes sold



Learn more: [sponsorsinc.org/justice-reimagined-tour/](https://sponsorsinc.org/justice-reimagined-tour/)

# DOWNTOWN CAMPUS- A SAFE HOME TO HEAL

Sponsors Downtown Campus offers a safe and stable home for women, mothers, children, and nonbinary individuals to rebuild their lives after experiencing incarceration.



Women often stay in transitional housing for up to 6 months. Mothers and their children often live in the cottage for an entire year and face unique challenges and barriers as they strive towards stability and self-sufficiency. We are thankful to be able to continue offering this unique space for vulnerable families.

114

Individuals lived at the Downtown Campus while participating in the Transitions Program

12

Women lived in Bothy Cottage

17

Children lived in Bothy Cottage

## LOOKING *to the* FUTURE



### Increase Housing Availability

Housing insecurity significantly impacts formerly incarcerated individuals here in Lane County. We continue to work with the local community on ways to increase affordable housing for individuals with conviction histories.



### Better Track & Analyze Data

Thoughtful data tracking provides important opportunities to share your impact on participants' lives and showcase how programs and services can change and evolve to best meet the needs of participants.



### Increase Second Chance Employer and Champion Networks

We are working hard to expand our business community partners who hire individuals with conviction histories and support our programs and services! Second Chance Employers and Champions are truly making a difference here in Lane County!

STAY CONNECTED!

[sponsorsinc.org](https://sponsorsinc.org)

